

Southern Florida District NMI

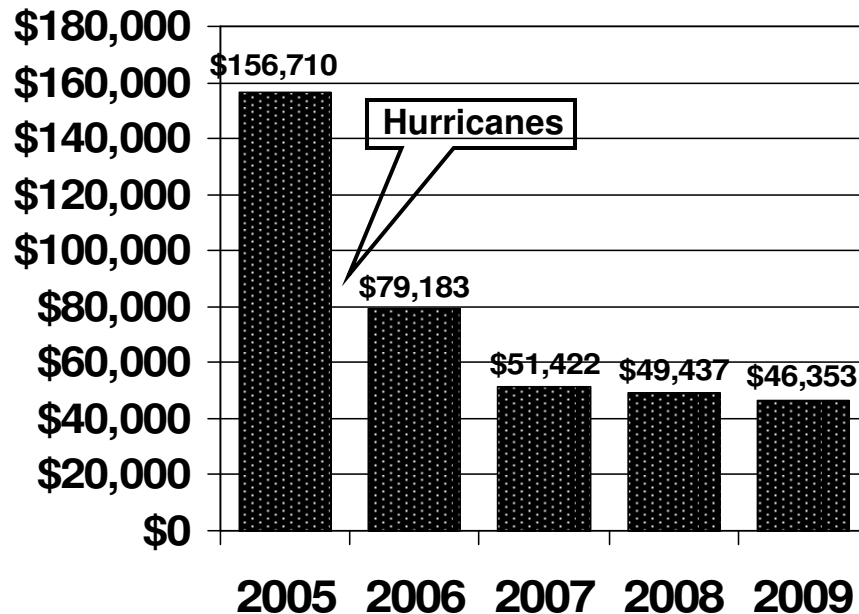
The following charts are included in the delegate packets for the annual Convention. This provides a five summary of the District's collective giving to various mission offering. These charts were used at the 2009 District Convention.

Dennis Moore
dmoorenmi@gmail.com
www.sfnazarene.org

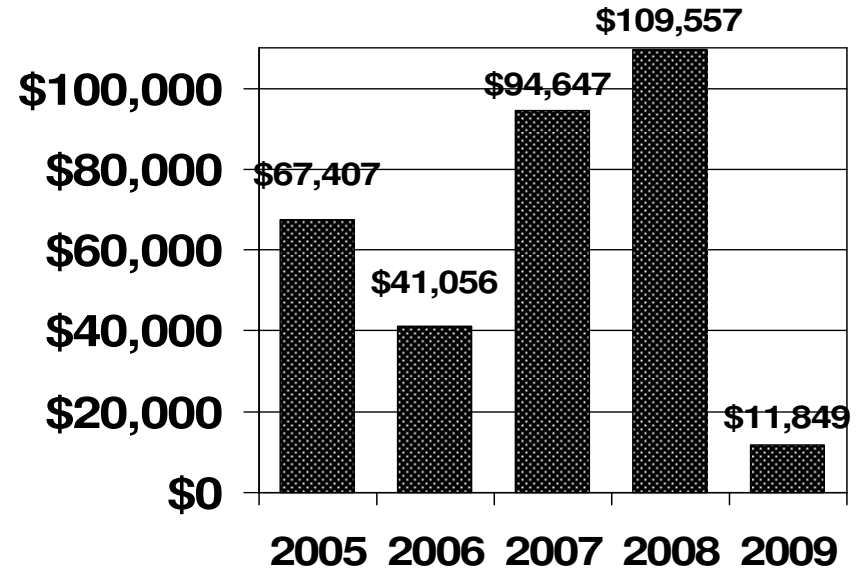
Southern Florida District Nazarene Missions International Giving 2009



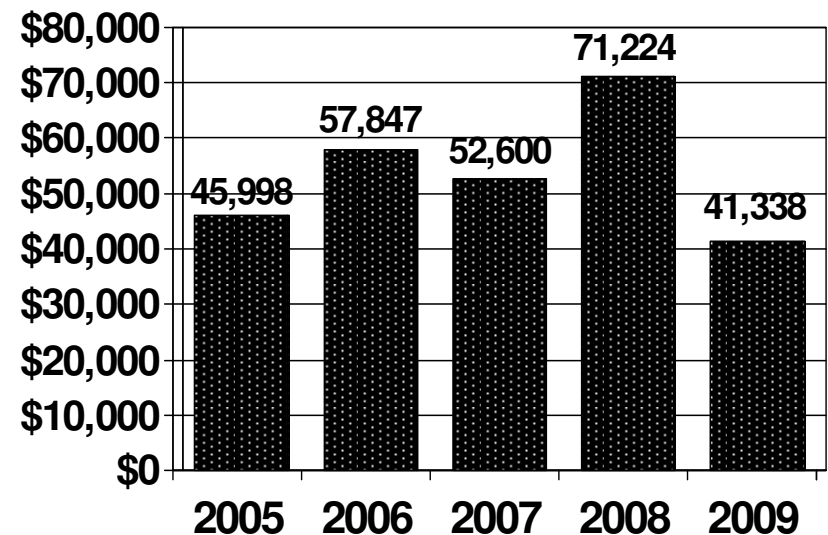
Compassionate Ministries



Work & Witness



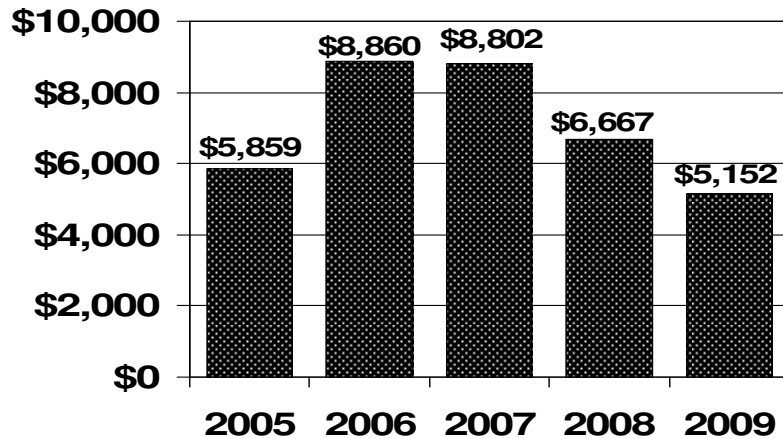
Alabaster Fund



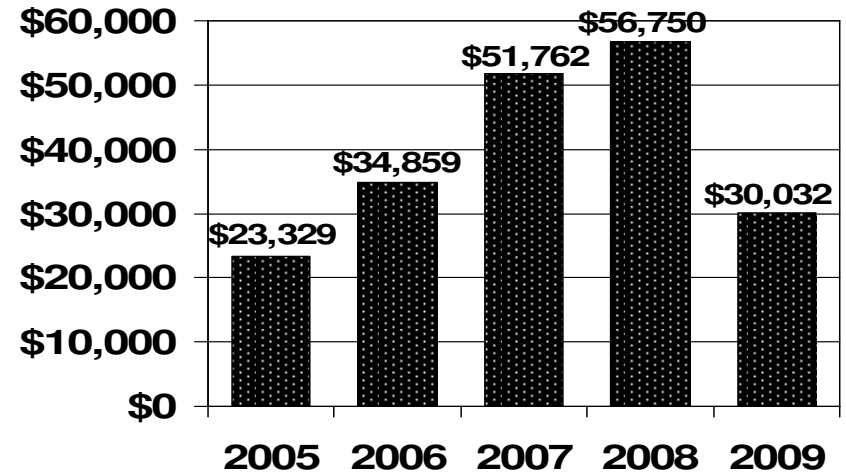


Southern Florida District Nazarene Missions International Giving

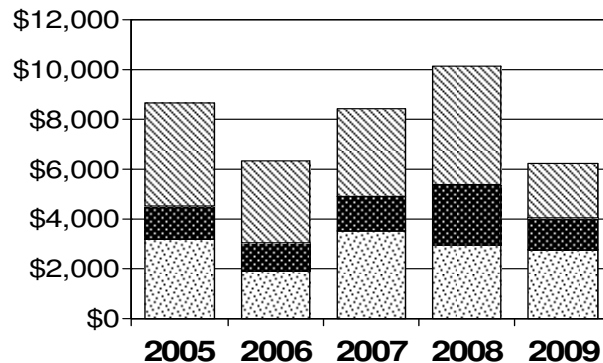
World Mission Broadcast



Missionary Tour Offerings

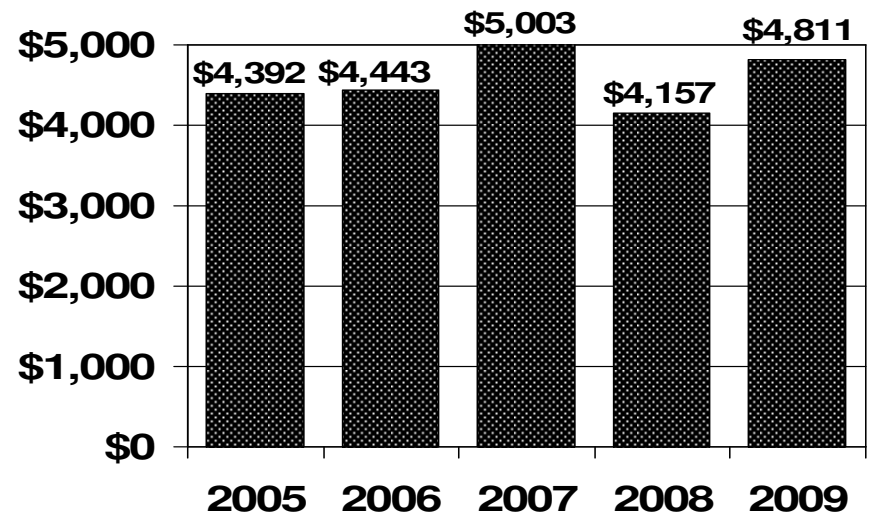


Missionary Medical Plan



	2005	2006	2007	2008	2009
Memorial Roll	\$4,150	\$3,285	\$3,470	\$4,770	\$2,185
DSA	\$1,325	\$1,135	\$1,415	\$2,425	\$1,290
Offerings	\$3,190	\$1,932	\$3,511	\$2,954	\$2,775

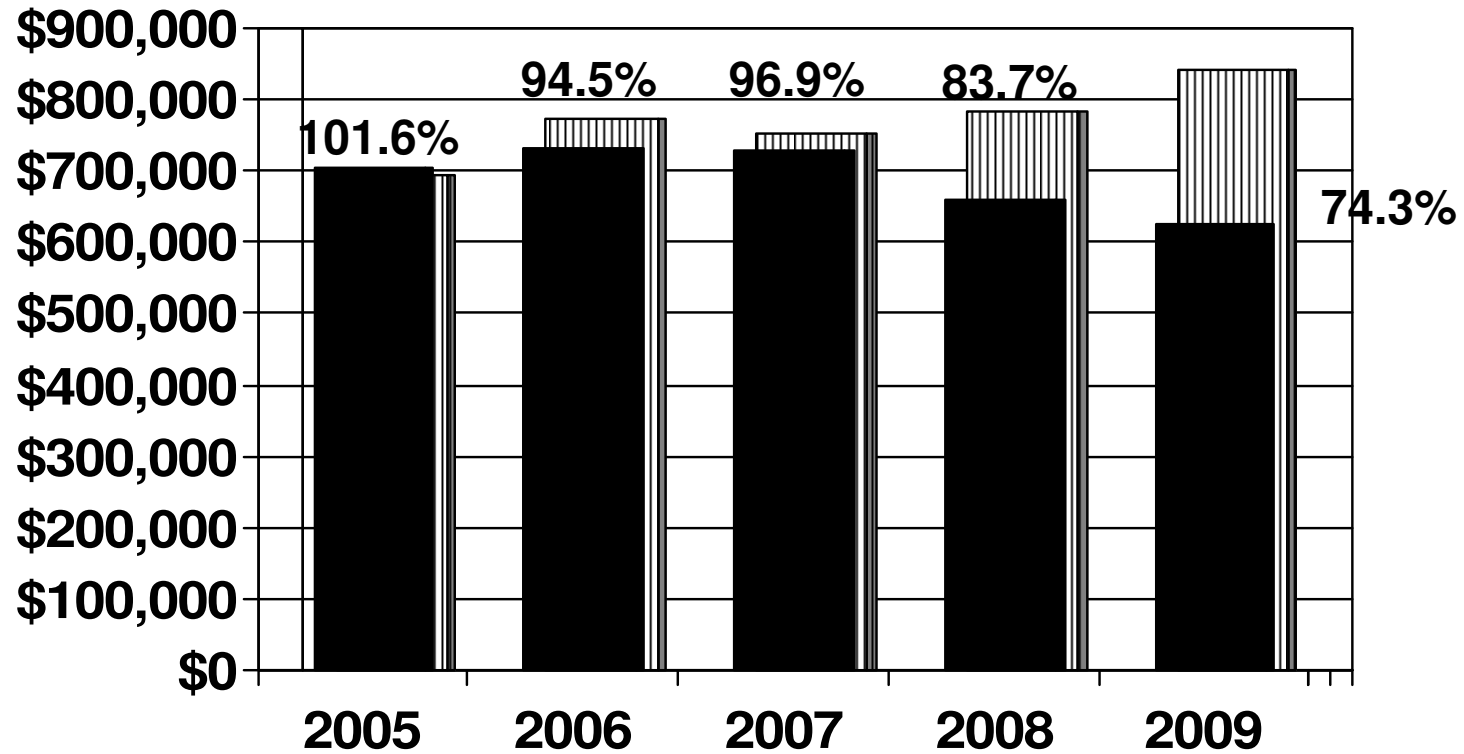
MissionaryLINKS





World Evangelism Fund

Southern Florida District



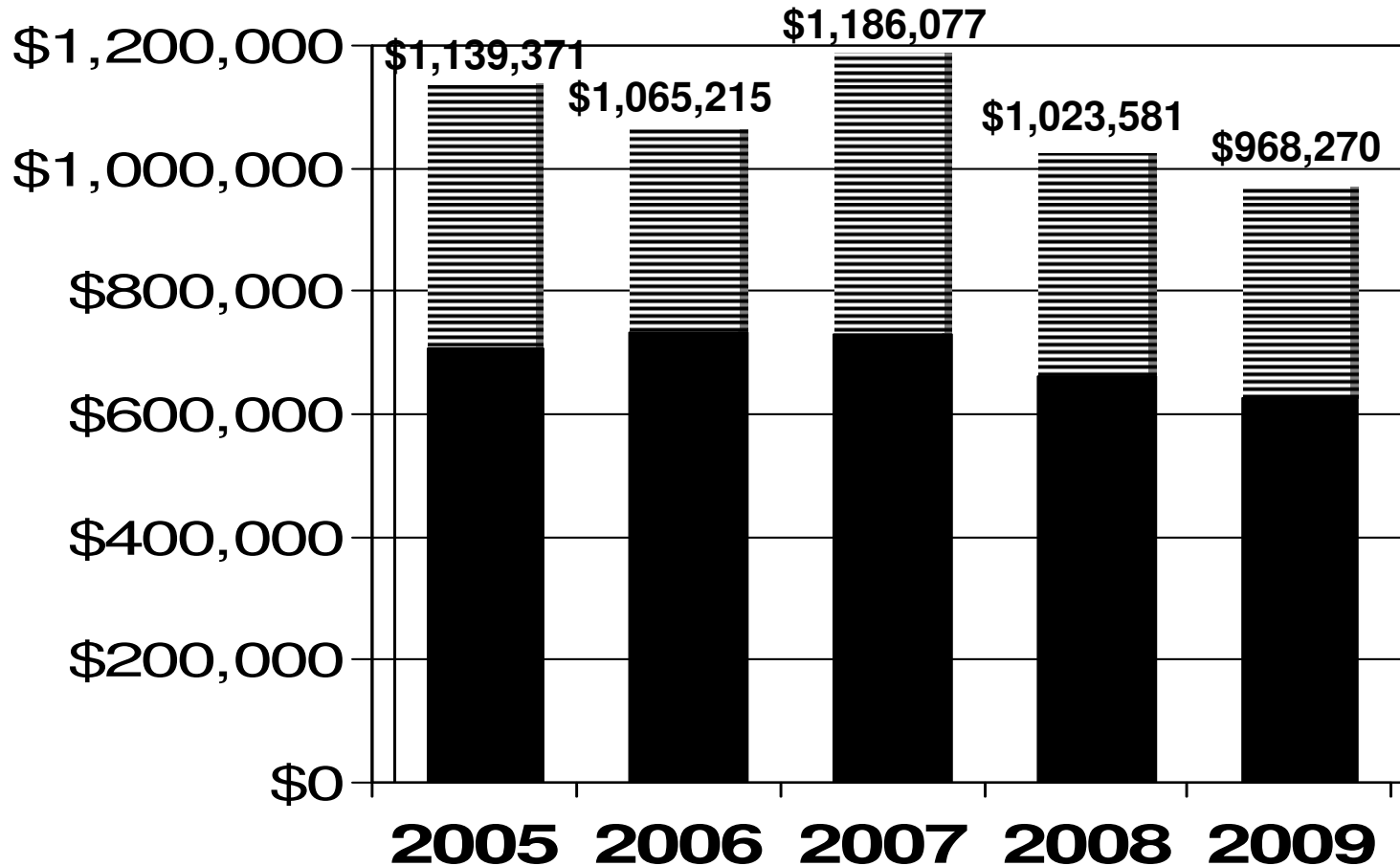
	2005	2006	2007	2008	2009
■ Given	\$705,911	\$731,438	\$729,164	\$660,498	\$625,970
▨ Goal	\$694,732	\$773,771	\$752,616	\$782,698	\$842,286



Total 10% Mission Giving

Southern Florida District

World Evangelism Fund plus other mission specials



	2005	2006	2007	2008	2009
Mission Specials	\$433,320	\$333,777	\$456,914	\$363,083	\$342,300
W. Evang. Fund	\$705,911	\$731,438	\$729,164	\$660,498	\$625,970